

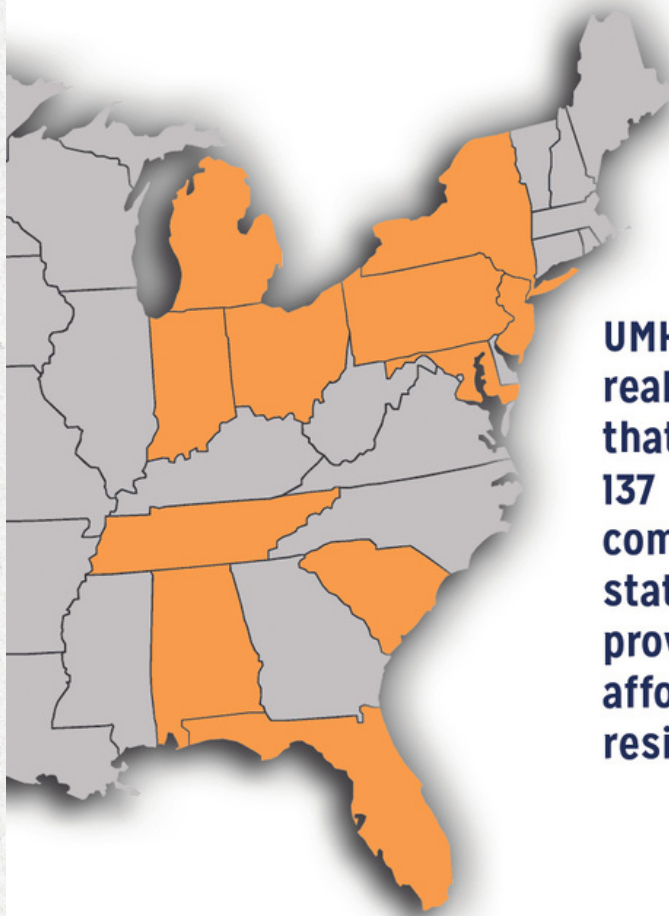
25 YEARS OF



IMPROVING LIVES...ONE STRIDE AT A TIME

SPECIAL STRIDES

UMH Properties, Inc.
Proudly
Supports
SPECIAL STRIDES



Real homes
Really *Affordable*

UMH Properties, Inc. is a real estate investment trust that owns and operates 137 manufactured home communities in twelve states. It is our mission to provide the best quality affordable housing for residents of all ages.



3499 Route 9N, Freehold NJ 07726 | UMH.com | NYSE:UMH

MISSION STATEMENT

Special Strides is a non-profit organization devoted to improving the lives of individuals with special needs. With a unique combination of therapy, horses, and the natural environment, individuals achieve goals appropriate for therapy, recreation, and education. Special Strides provides all individuals an opportunity to “Improve their lives... one stride at a time” regardless of financial status.





OUR HISTORY

Founded in 1998, Special Strides is a place where horses, therapy and nature come together. Sam Landy and Congress Hill Farm divinely became the homestead where Laurie Landy began her dream of providing Occupational Therapy with the partnership of a horse. While employed in the Freehold school system, Laurie would invite the special needs pre-school for a day on her farm. Witnessing children independently walking for the first time or uttering their first word convinced her to begin developing the Special Strides program. With the support of her family, friends, community, dedicated therapists, volunteers and, of course, the horses, Laurie's dream became a reality. Today, Laurie and Co-Executive Director and Physical Therapist, Susie Rehr, can indeed point to the major strides they have made since the inception. Serving 150 individuals, Special Strides fills a role within the special needs community by offering a variety of programs that inspire children and adults to discover their strengths through engagement with horses and other farm activities. Programs and services include Physical Therapy, Occupational Therapy, Speech Therapy, Adaptive Riding, and Equine Facilitated Learning. For those who cannot afford the program, Special Strides and its supporters are committed to making it possible for them to participate through a financial assistance program called the Steven Werthan Memorial Fund.

DEAR COMMUNITY

Thank you for celebrating our 25th Birthday with us. It has been 25 years of wonder and service to the community. Fifteen years ago, the father of one of our clients called Special Strides a “beacon in the community”. Like the beacon of a lighthouse, we help our families navigate the uncharted waters they face during their journey, we light the way for our staff to learn and be their best, we guide new volunteers through the learning process to assist in sessions, and we partner with our donors as we stand strong against all storms. This year we have provided therapy, recreation, and education to over 140 individuals with our staff of 25 dedicated individuals, 50 volunteers, 18 amazing horses, and over 1040 donations of support from YOU!

Thank you for joining us on the journey!

With Gratitude,
Laurie & Susie



1998-2006



2000

Clinic expanded with addition of physical therapy.

When an individual sits astride a horse, the horse's walking gait imparts a movement response similar to normal human gait which has an immediate impact on their balance, coordination and timing, grading of postural responses and physiological functioning.

The physical therapist can use this movement to address the motor needs of each patient and to promote functional outcomes in skill areas related to gross motor ability such as sitting, standing and walking.



1998

Special Strides Therapeutic Riding Center was founded by Laurie Landy, OTR.

Laurie was able to combine her passion as an occupational therapist, her love of the natural environment, and her knowledge of equine movement. Stymied by the limits of traditional classroom based therapy, Laurie envisioned an environment where individuals could reach their therapy and recreational goals in a locale that supported all their needs; physical, emotional, sensory, and communication.



In the early years of Special Strides, Laurie and the team were focused on building a strong foundation with a variety of programs.



2006

New Offices

As the programs at Special Strides grew, there was a need for more space. Special Strides offices are located in a heated/air conditioned office including a fully equipped therapy clinic. This is where both staff and volunteers work to plan sessions, have team meetings, plan fundraising events and much more.

2004

Program offerings expanded to include Adaptive/Therapeutic Riding

Adaptive Riding is a recreationally based horseback riding program for individuals who need special teaching paradigms. Participants learn riding and horsemanship skills with the assistance of riding instructors and volunteers.

Steven Werthan Memorial Fund provides financial assistance to its first recipients.

It is the goal of Special Strides to help provide all children an opportunity to experience our magic regardless of their financial status.



2007-2016



2011

Became a PATH Premier Center
PATH Intl. accredits centers and certifies professionals so participants can experience the best and safest services in the EAS industry. In addition to safety standards, PATH Intl. provides over 150 standards to help centers sustain viable programs using best business practices, provide compassionate, humane equine management, program- specific standards, facility maintenance and precautions and contraindications for disabilities.

2008

Joseph Farrelly Therapeutic Driving Program opened its doors

The Joseph Farrelly Driving programs started at Special Strides with two driving horses and a new 4-wheeled carriage. Therapeutic carriage driving offers individuals with physical, cognitive, sensory or emotional conditions the benefits of the motion and emotion of the horse without being on top of the horse. For riders who are unable to mount a horse, carriage driving provides a great alternate equine assisted activity.



In these years, more new programs were being developed, and Special Strides achieved the goal of becoming a PATH accredited center.

2016

Equine Facilitated Psychotherapy expansion

Equine Facilitated Psychotherapy is a unique and powerful methodology providing counseling services to those in need. With the affordances of the equine and the equine environment, changes can be made in the emotional health of individuals with anxiety, PTSD, relationship and anger issues, depression, and those in recovery from abuse.

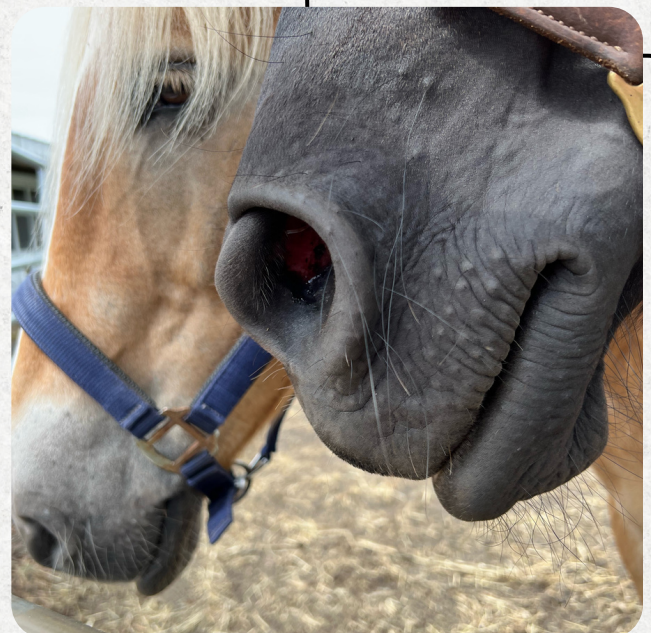
Received Accreditation Renewal as a PATH Premier Center



2013

Equine Facilitated Learning expansion

Equine Facilitated Learning (EFL) is a non-mounted, hands-on program for students. Horsemanship and humanism skills are developed by working with our horses through grooming, leading, and guided un-mounted activities. These activities are designed with specific life skills in mind to help foster interpersonal growth, improve communication, confidence, self-esteem, leadership, and teamwork, all while having FUN!



2017-2023



2021

Renovation to deck and ramp of office
Our donors and The Jon Ben Snow Memorial Trust funded a new, fantastic accessible ramp and deck!

"Hello to Julia" Short Documentary wins Hope Award at Equus International Film Festival and New Hope Film Festival

Hello to Julia is a short documentary filmed by JAB Films with Special Strides about the trials of childhood disability, the love of family, and overcoming the odds.

2019

- "AJ and Azaliah" wins:**
- **Merit of the Horse/ Human Bond @ Equus International Film Festival**
 - **Best Homegrown Public Service Announcement @ Garden State Film Festival**

One of the many films produced by Jenna A. Bush (JAB Films) with Special Strides, AJ and Azaliah documents the connection between horse and rider, from the horse's perspective.



The past few years have allowed Special Strides to share our message of hope and continued improvement and development of our facilities and services.



2023

25th Anniversary

Special Strides celebrates 25 years of improving lives...one stride at a time!

Nature Based Occupational Therapy

“Social Strides”, a nature-based occupational therapy program was started by an OT Doctoral Intern! It includes a dynamic curriculum and a program, with activities across the while farm engaging in friendship and fun.



Our 25th Anniversary Barn Dance Gala was a great success thanks to the hard work and generosity of so many!



Thanks to our donors for raising

\$207,785

to enable those with life challenges walk, talk, play, learn, and love with greater ease & help our herd of 18 horses by providing hay for grazing, oats for munching, veterinary care, hoof trimming, and supplies such as coats, brushes, saddles, and bridles!

THANK YOU TO OUR

board of directors

Sam Landy
Laurie Landy
Susie Rehr
Rob Kash
Carol Werthan

Neal Herstik
Gary Fox
Patty Gallagher
Vince Davis
Rob McNaboe

& committee

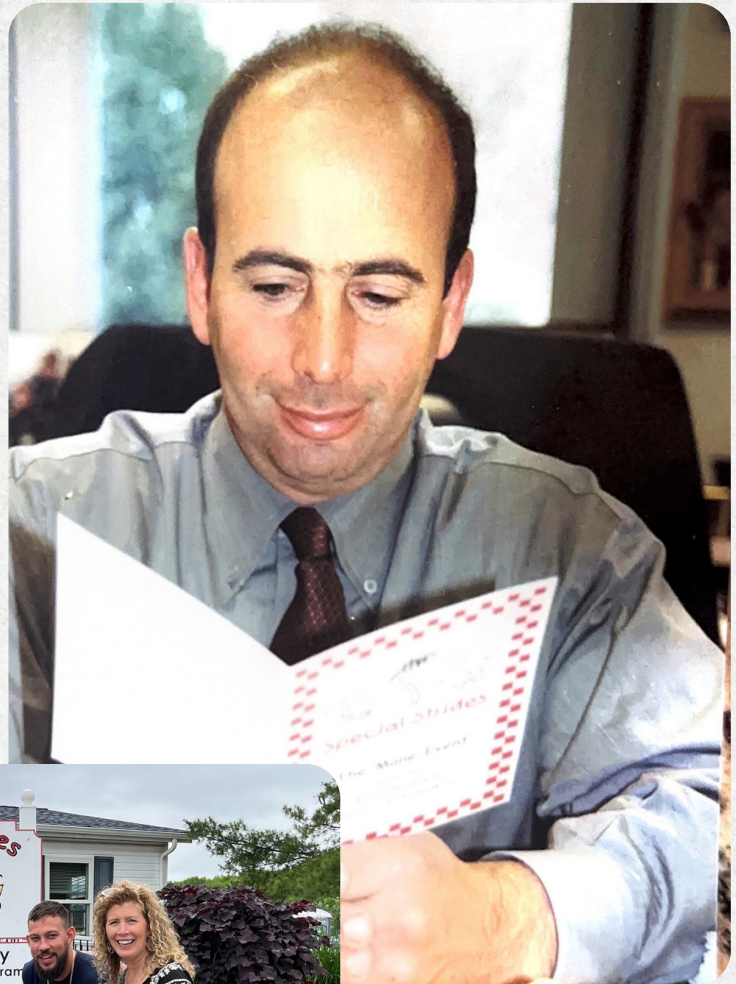
Gayle Goldstein
Barbara Zaghera
Michelle Fields
Terry Pollitt
Sharon Stern
Enid Bush
Susie Rehr
Jane Burrows
Beth Miller
Jonathan Goldstein

Carrie Gold
Adrienne Barilka
Nicole Kline
Laurie Landy
Connie Kirman
Elaine Abramczyk
Thomas Araujo
Keith Terry
Emily O' Connor

Emily Kirman
Kaitlyn Valentine
Robin Alda
Samantha Pellecchia
Alexa Ambrosino
Eric Rehr
Melissa Rehr
Andrea Rehr
Phyliss Cappuzzo
Elliot Stern

SPECIAL THANKS TO..

*Sam
Landy*



The Barilkas & A.B. Carpet

THANK YOU TO OUR SPONSORS...



CentraState is proud to support

SPECIAL STRIDES



*Thank you for improving lives
one stride at a time*



CentraState
Healthcare Foundation

225 Willow Brook Rd, Suite 5 • Freehold, New Jersey 07728
(732) 294-7030 • centrastatefoundation.org

THANK YOU TO OUR SPONSORS...



iPlay America
GET INSIDE THE FUN!

NO MATTER HOW YOU CHOOSE TO PLAY iPLAY AMERICA IS THE **ONLY** PLACE TO GET INSIDE THE FUN!

iPA SPEEDWAY GO-KARTS • 250+ ARCADE GAMES • LASER TAG RIDES • TOPGOLF SWING SUITE • XD DARK RIDE AND MORE!

iPlayAmerica.com | Freehold, NJ | 732.577.8200



APPLIANCE BROKERS LTD.
ABL

"Appliances For A Changing World"

Amboy Bank is proud to support:
Special Strides

Supporting our communities since 1888

3590 US Highway 9
Old Bridge, NJ 08857

1.800.94.AMBOY | AmboyBank.com

 **AMBOY**
Bank

Member FDIC

THANK YOU TO OUR SPONSORS...



DUNKIN'

316 APPLGARTH ROAD, MONROE, NJ
221 APPLGARTH ROAD, MONROE, NJ
434 MAIN STREET, SPOTSWOOD, NJ

WE WOULD LIKE TO ACKNOWLEDGE
THE DEDICATION AND EFFORTS THAT
SPECIAL STRIDES PUT FORWARD TO
MAKE A DIFFERENCE IN ALL OF THEIR
PATIENT'S LIVES

WE ARE PROUD TO SUPPORT YOU IN
YOUR EFFORTS



IMS
Logistics
Management Solutions

Proudly
supporting
Special Strides
for 24 years



**W&E
BAUM**

Redefining Recognition for Over 100 Years

NEW YORK CITY POLICE DEPARTMENT MOUNTED UNIT

- DONOR WALLS
- AWARDS
- PLAQUES
- SIGNAGE
- MEMORIALS
- AND MORE!

89 Bannard Street
Freehold, NJ 07728
info@webaum.com
800.922.7377
WEBAUM.COM
Facebook.com/webaum
Instagram:@we_baum



THANK YOU TO OUR SPONSORS...



Gary E. Fox
Financial Advisor

414 Central Avenue, STE. 2C,
Westfield, NJ, 07090

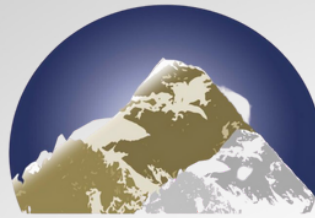
Phone (973) 236-1713
gary@gfoxfinancial.com
www.gfoxfinancial.com



PAVESE-McCORMICK AGENCY, INC.
COMPLETE INSURANCE SERVICES

**Pavese McCormick
wishes Special
Strides a Happy
25th Anniversary!**

PaveseMcCormick.com
732-247-9800
info@pavesemccormick.com



EVEREST
REALTY GROUP

3499 Route 9 North Suite 1-E
Freehold, New Jersey 07728
732 625-1055

THANK YOU TO OUR SPONSORS...



WilkinGuttenplan
proudly supports
the work of
Special Strides and
their mission of
improving lives, one
stride at a time.



New Jersey | New York City
732.846.3000 wgcpas.com

Congratulations
&
Best Wishes
Special Strides!



The Iantosca Family

THANK YOU TO OUR SPONSORS...

ad.winston
service, inc.

Service From Design Through Installation and Maintenance



A PREVENTATIVE MAINTENANCE TEAM YOU CAN TRUST

a.d. Winston Service is a team of licensed engineers and maintenance technicians. Our experts create customized maintenance solutions based on each customer's individual, mechanical, and financial requirements. We work 24/7 to help overcome difficult mechanical problems. With us, expect an innovative solution that reduces costs, prevents breakdowns, and extends the life of your HVAC equipment.

OUR SPECIALTIES

- Scheduled Maintenance**
Maintenance routines include inspections, tune-ups, coil cleanings, filter replacements, and more.
- Emergency Services**
We have a support team available 24/7 to address urgent mechanical issues in no more than two hours.
- Replacements and Retrofitting**
If a system is due for an upgrade, we'll come through with effective labor and the right materials.

BRANDS WE WORK WITH

- Aaon
- Trane
- Carrier
- Mitsubishi
- Seasons 4
- All major manufacturers

(718) 361-2811 • 4315 36th St. • Long Island City, NY 11101 • adwinstonservice.com

Children's Specialized Hospital Foundation®



KIDS CAN BECAUSE YOU CARE

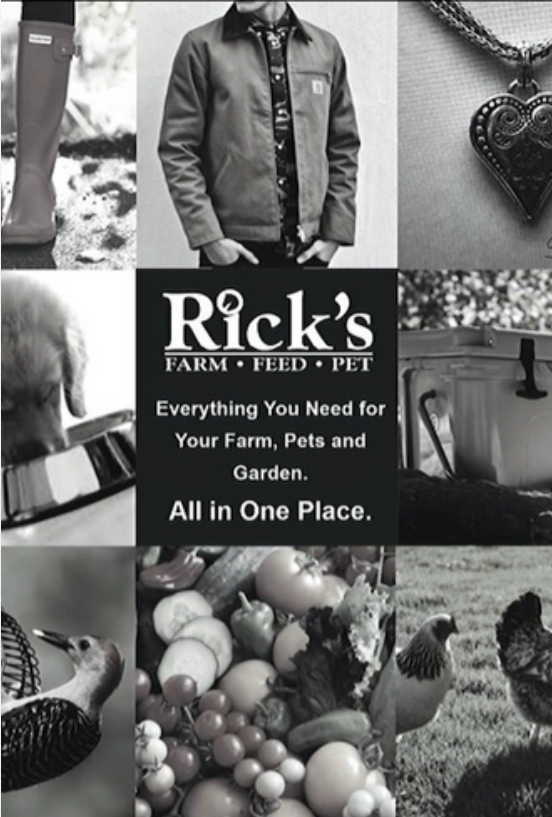
We are proud to support **Special Strides**

Your work truly aligns with our vision of a world where all children can reach their full potential.

Congratulations on 25 Years of service to your community!



LEARN MORE AT **GIVE2CSH.ORG**



Rick's
FARM • FEED • PET

Everything You Need for Your Farm, Pets and Garden.
All in One Place.

[Cg]
732.676.4100
cgteam.com

Cg Tax, Audit & Advisory proudly supports Special Strides.
Best wishes for a successful gala and thank you for all you do!

Michael V. DeMola, CPA
Shareholder, Tax Services Group
732.279.7713 | mдемola@cgteam.com

THANK YOU TO OUR SPONSORS...



Hines Collective

Megan Drew Gostkowski

A big thanks to Laurie, Susie, and all of the handlers for all of their time and dedication in helping children like Megan shine brightly for the whole world to see.

Love, The Gostkowsky Family



**THANK YOU FOR BEING AN
ANNUAL SPONSOR**

Mimi & Jack Werbler
Dan & Regina Werbler

**Thank you Wendy
& Gerald Marks**

THANK YOU TO OUR SPONSORS...

PUTTING YOU AND THE COMMUNITY FIRST



From New Jersey and beyond, as our footprint expands, we're still with you every step of the way.



Always Putting You First.

Call us today at 1.888.623.2633 or visit us online at oceanfirst.com.



M. DAVID
DeMarco
FUNERAL HOME, INC.



T. REAGAN
TRUCKING & EXCAVATING INC.

TRUCK RENTAL MACHINE RENTAL
SAND - STONE RECYCLE CONCRETE
TOM REAGAN

member Better Business Bureau
member NFIB

(732) 967-9994

To find out more about our sponsorships, scan the QR code



Stay connected with us by scanning the codes below with your phone camera!



Website



Facebook



Instagram

